



**WORLD'S BEST  
ALLOY BULLBARS**

**East Coast Bullbars (ECB Pty Ltd)**

Tel: 07 3897 5700

Fax: 07 3283 1168

ecb@ecb.com.au www.ecb.com.au

29 Snook St  
Clontarf QLD 4019  
Australia

Po Box 122  
Margate QLD 4019  
Australia

## **BMB60SY**

REPLACES: 0.00.000  
REVISED: 22.01.14

### **FITTING INSTRUCTIONS**

#### **MERCEDES BENZ SPRINTER 10/13on BIG TUBE™ BAR VEHICLE FRONTAL PROTECTION SYSTEM (VFPS) BAR FOR AIR BAG AND ADR COMPLIANT VEHICLES**

Check installation hardware before commencing.

1. Lift bonnet
2. Remove two T25 Torx head screws and four push-pull clips from top of grille. Remove grille by pushing down on four lower clips and gently pull grille forward.
3. Removing four push-pull clips from inner guard, one push-pull clip from bumper to guard. Gently pull side of bumper sideways to release from guard clips. Disconnect fog light wiring and temperature sensor. From front of bumper under grille near headlight remove two T25 Torx head screws. From centre of bumper in step and number plate area, remove two T45 Torx head screws; remove two 13 mm head bolts. Carefully remove bumper from vehicle.
4. Measure template before cutting to ensure correct. Cut out template supplied and join. Mask end of bumper where marking and cutting will occur. Using template supplied carefully mark out and cut bumper to match photos. Double check all measurements before cutting. **See Figure 1. CAUTION:** Measure template as some photocopiers may vary.
5. Remove bumper locator from side of guard, four T20 Torx head screws, one T25 Torx head screw and one T25 Torx head screw. Trim front off locator with sharp knife or similar tool. **See Figure 2 and 3.** Refit to vehicle using front T20 and T25 Torx screws.
6. Refit bumper cover using two T25 Torx screws near headlights. Install 3mm clip lock trim to cut edge of plastic bumper.
7. Refit grille using original screws and push pull clips.
8. Remove four 13 mm head bolts from underside of bumper reinforcement. Install steel mount to front of chassis rail using three M8 x 35 bolts, flat washers and spring washers. On underside of chassis rail rear hole install M12 x 50 bolt, flat washer and spring washer. Using steel mount as a guide, drill front hole to 10 mm. install M10 x 40 bolt and washer on wire, flat washer, spring washer and nut. To front hole, **see Figure 4.**  
**NOTE: Blow all filings clear and treat all exposed metal with a rust inhibitor.**
9. Align mounts centrally on vehicle using outside outside measurement on alloy mounts on ECB frontal protection bar as a guide. Ensure mounts are parallel to chassis rail.
10. Remove air vents from protection bar
11. Splice ECB indicator/ park wiring into original wiring loom behind headlamps using six wire crimps supplied, per /side.
12. Fit ECB indicator / park lights into protection bar as per instructions supplied with the LED indicator kit.  
**NOTE: Ensure park light is to outside. See figure 5.**



**WORLD'S BEST  
ALLOY BULLBARS**

**East Coast Bullbars (ECB Pty Ltd)**

Tel: 07 3897 5700

Fax: 07 3283 1168

ecb@ecb.com.au www.ecb.com.au

29 Snook St  
Clontarf QLD 4019  
Australia

Po Box 122  
Margate QLD 4019  
Australia

13. Fit 6mm clip lock trim to rear of protection bar. **NOTE:** Trim off lower edge on an angle so trim will sit flush with end of protection bar. **See figures 6, 7 and 8.**
14. Attach ECB fog lights to protection bar. Place M6 x 20 bolts, spring washers (supplied) through light mount from inside and attach nut to top. Slide assembly into light mount in Protection bar and centralize light to hole.) **TIGHTEN FIRM ONLY.. See figure 9.**
15. Connect ECB Quick Click fog light wiring harness (supplied) into original wiring harness.
16. For vehicles with large vacuum canister: Remove from chassis rail, two 10mm head nuts. Fit canister to top of ECB steel mounting bracket (supplied), using two M6 x 25 bolts, flat washers and nyloc nuts (supplied). Carefully push canister up into opening behind headlight and secure back to chassis rail using two M6 nyloc nuts and washers. Ensure canister and associated piping does not rub on surrounding parts. **See figure 10.**  
**Note:** Canister can be on either side of vehicle. Use long bracket (6mm thick) for right hand side and shorter bracket 4mm thick) for left hand side of vehicle.
17. Install protection bar to inside of steel mount using six M12 x 40 bolts, flat washers, spring washers and nuts (supplied).
18. Install protection bar side mount into hole in guard hanger and protection bar rear wing using M8 x 25 bolt, spring washer and flat washer (supplied) into guard and M10 x 40 bolts , flat washers , spring washer and nuts (supplied) into rear wing .**See Figure 11.**
19. Align protection bar to vehicle and tighten all bolts. **See Figure 12 and 13.**
20. Install side underbelly guards to vehicle using four M6 x 30 bolts, flat washers and nyloc nuts .per / side. Front of underbelly guard sits on top of ECB protection bar skirt flange. **See Figure 14.**
21. Install centre underbelly guard with rear flange to under side using three M6 x30 bolts, flat washers and nyloc nuts in front holes and use same bolt as front and side guard for rear hole. **See Figure 15.**
22. Trim guard liners to suit rear of channel and underbelly guards. Install using four 12-14 gauge self-tapping screws into rear of underbelly guard. **See Figure 16.**
23. Refit vents to protection bar.
24. Check all lights for correct operation.

#### **ENSURE NUMBER PLATE IS CLEARLY VISABLE**

**Note:** When fitting/refitting the licence plate to the vehicle, ensure there is no obstruction to licence plate vision in accordance with local authorities. If required relocate licence plate to an alternate location.

#### **Further VFPS Notes:**

- a) Do not attach VFPS to the vehicle using anchorages not intended for this purpose (e.g. engine mounting bolts).
- b) Do not use this product for any vehicle make or model, other than those specified by the VFPS manufacturer.
- c) Do not remove the plaque or label from the VFPS.
- d) Do not modify the structure of the VFPS in any way.
- e) No accessory or fitment should project forward of the VFPS forward profile.
- f) **ENSURE THESE INSTRUCTIONS ARE LEFT WITH VEHICLE OWNER AND/OR OPERATOR.**



East Coast Bullbars (ECB Pty Ltd)

Tel: 07 3897 5700

Fax: 07 3283 1168

ecb@ecb.com.au www.ecb.com.au

29 Snook St  
Clontarf QLD 4019  
Australia

Po Box 122  
Margate QLD 4019  
Australia

WORLD'S BEST  
ALLOY BULLBARS

### **IMPORTANT INFORMATION**

Periodically check bolts and nuts for correct tightness, especially if travelling on rough roads

### **FITTING KIT**

1 – Pair Steel mounting brackets.	6 – M8 x 35 bolts
1 – RH side Steel canister bracket (BMB60SY_C6MS)	8 – M8 flat washers
1 – LH side Steel canister bracket (BMB60SY_C4MS)	8 – M8 spring washers
2 – Alloy guard support mounts.	13 – M6 x 30 bolts
1 – Centre under body guard	2 – m6 X 25 BOLTS
1 – Pair side under body guards	28 – M6 flat washers
8 – M12 x 1.5 x 50 bolts	2 – M6 spring washers
14 – M12 flat washers	15 – M6 Nyloc nuts
8 – M12 spring washers	2 – M6 nuts
6 – M12 nuts	4 – 12-14 gauge self tapping screws
2 – M10 x 1.25 x 40 bolts and washers on 300 mm wire	1 – ECB LED Indicator / Park light kit.
2 – M10 x 1.25 x 40 bolts	1 – ECB fog light kit
6 – M10 flat washers	1 – Quick click fog kit (IC12COL1004ECB )
4 – M10 spring washers	6 – Cable locks
4 – M10 nuts	1 – 2950 mm length 6mm clip lock trim
2 – M8 x 25 bolts	2 – 550mm length 3mm clip lock trim



**WORLD'S BEST  
ALLOY BULLBARS**

**East Coast Bullbars (ECB Pty Ltd)**

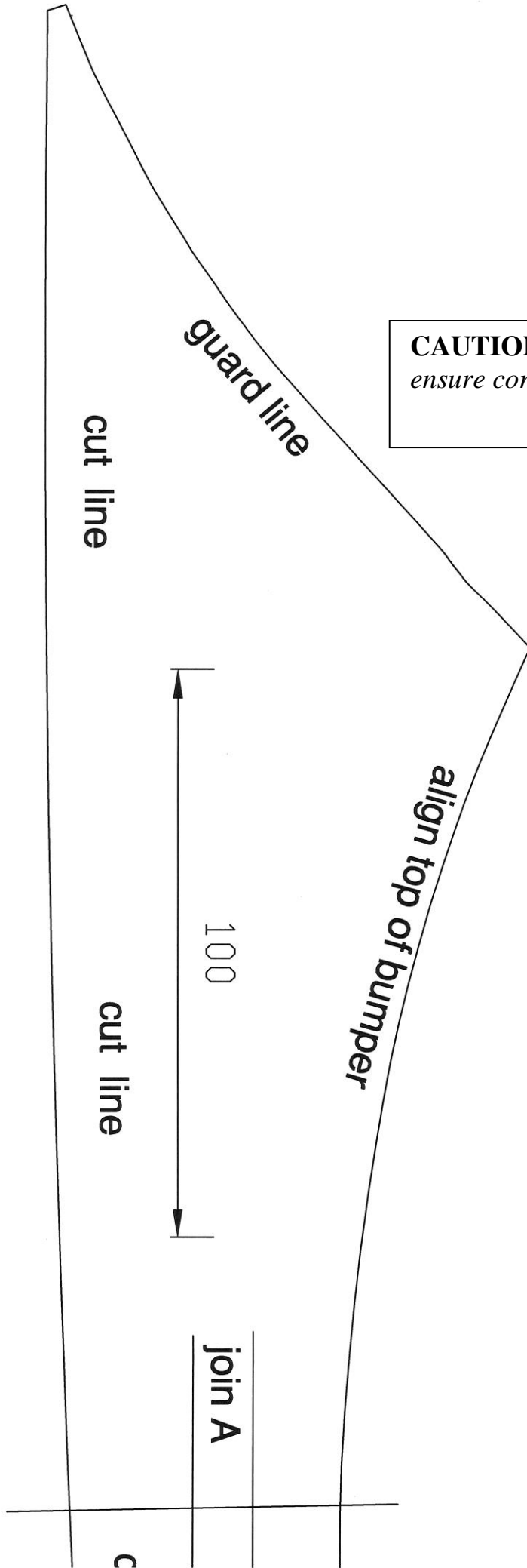
Tel: 07 3897 5700

Fax: 07 3283 1168

[ecb@ecb.com.au](mailto:ecb@ecb.com.au) [www.ecb.com.au](http://www.ecb.com.au)

29 Snook St  
Clontarf QLD 4019  
Australia

Po Box 122  
Margate QLD 4019  
Australia



**CAUTION:** *Measure template to ensure correct size, some printers may vary.*

cut line

guard line

100

cut line

align top of bumper

join A

c



align top of bumper

join A

join B

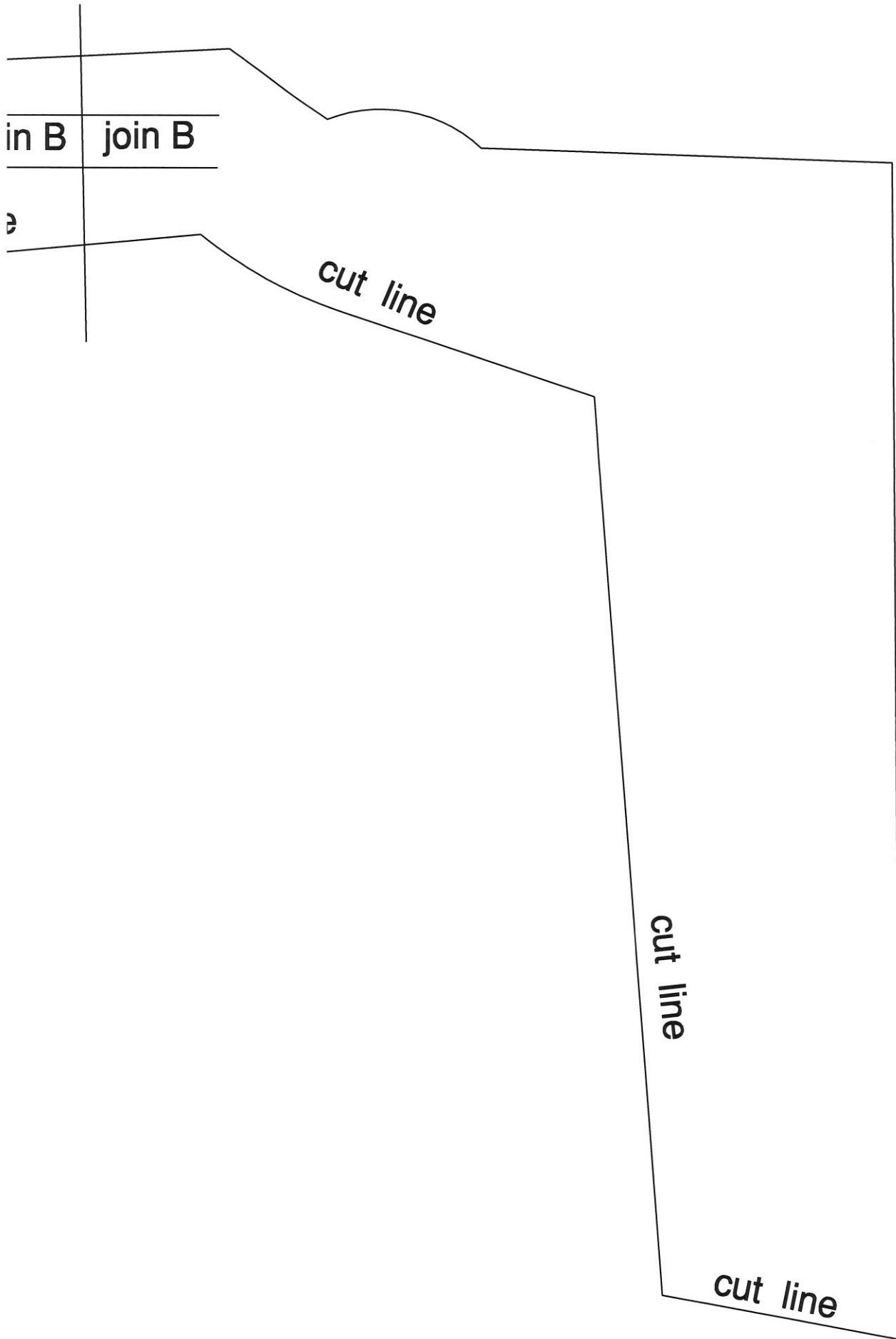
cut line

cut line

cut line







in B join B

B

cut line

cut line

cut line





East Coast Bullbars (ECB Pty Ltd)

Tel: 07 3897 5700

Fax: 07 3283 1168

ecb@ecb.com.au www.ecb.com.au

29 Snook St  
Clontarf QLD 4019  
Australia

Po Box 122  
Margate QLD 4019  
Australia

WORLD'S BEST  
ALLOY BULLBARS



Figure 1: Drivers side template



Figure 2: Trim locator to suit bumper cut



Figure 3: Trimmed locator after cut

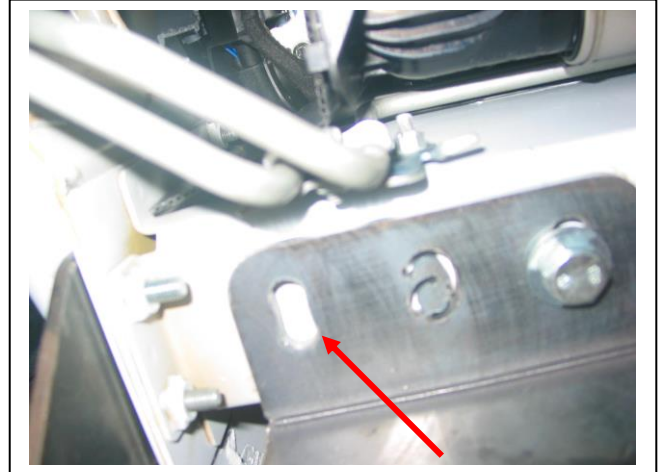
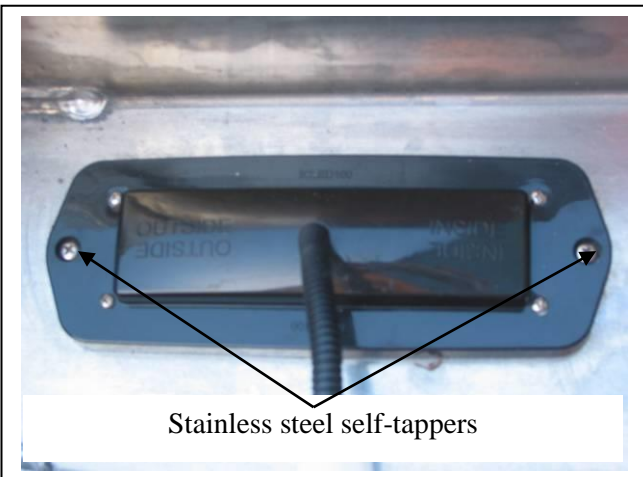
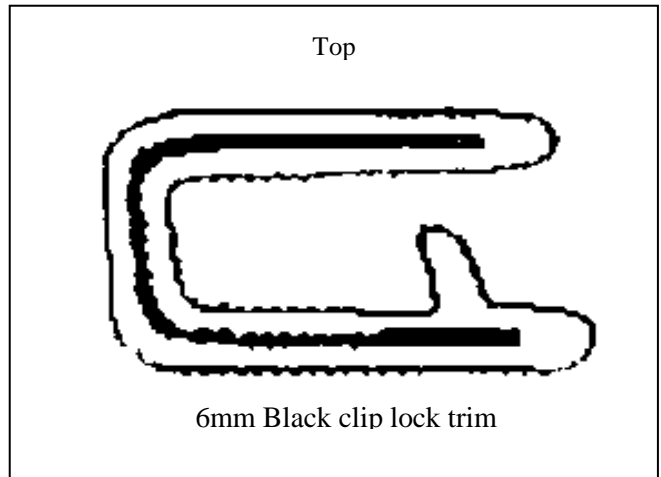


Figure 4: Drill 10 mm hole in centre of front slot.



Stainless steel self-tappers

Figure 5



6mm Black clip lock trim

Figure 6



East Coast Bullbars (ECB Pty Ltd)

Tel: 07 3897 5700

Fax: 07 3283 1168

ecb@ecb.com.au www.ecb.com.au

29 Snook St  
Clontarf QLD 4019  
Australia

Po Box 122  
Margate QLD 4019  
Australia

WORLD'S BEST  
ALLOY BULLBARS

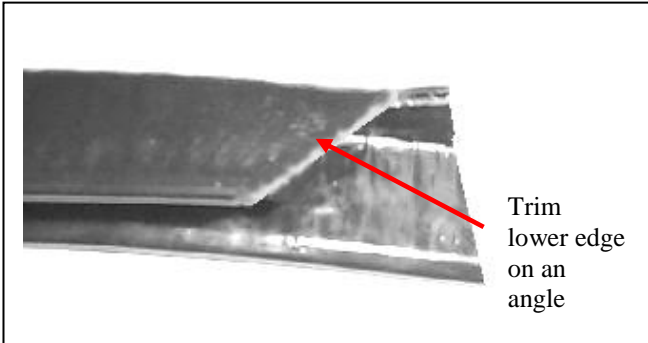


Figure 7.

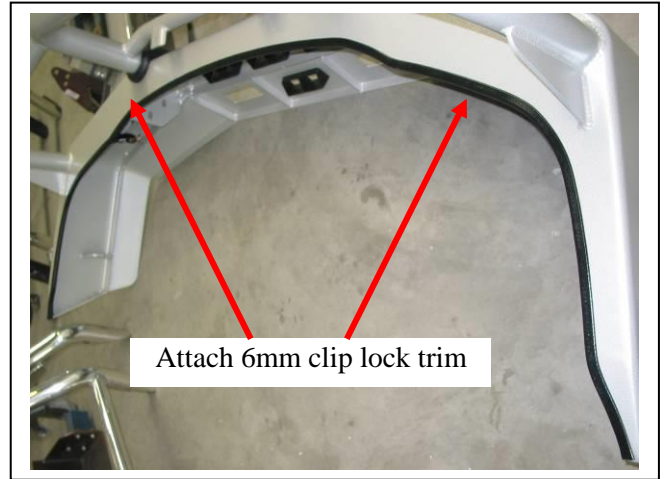
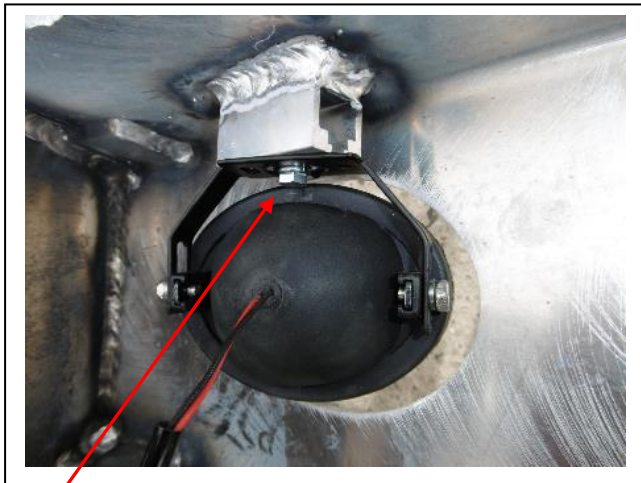


Figure 8.



M6 bolt

Figure 8.

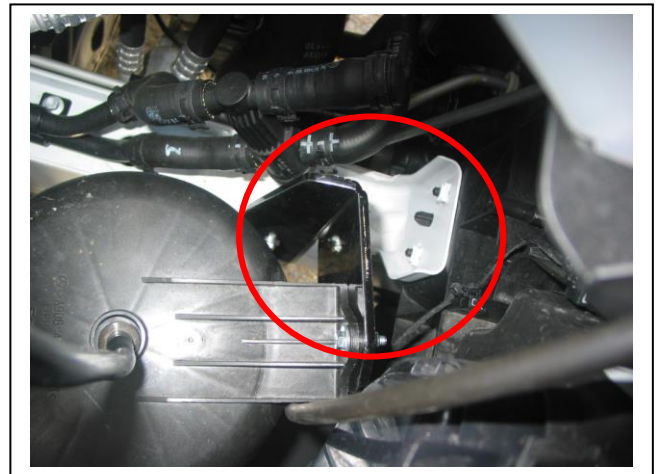


Figure 10: Canister bracket fitted TO DRIVERS SIDE

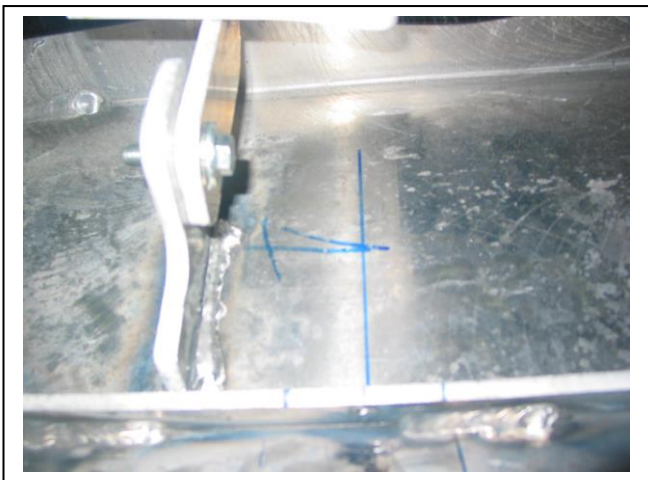


Figure 11: Rear wing side mount.



Figure 12: Front view.



East Coast Bullbars (ECB Pty Ltd)

Tel: 07 3897 5700

Fax: 07 3283 1168

ecb@ecb.com.au www.ecb.com.au

29 Snook St  
Clontarf QLD 4019  
Australia

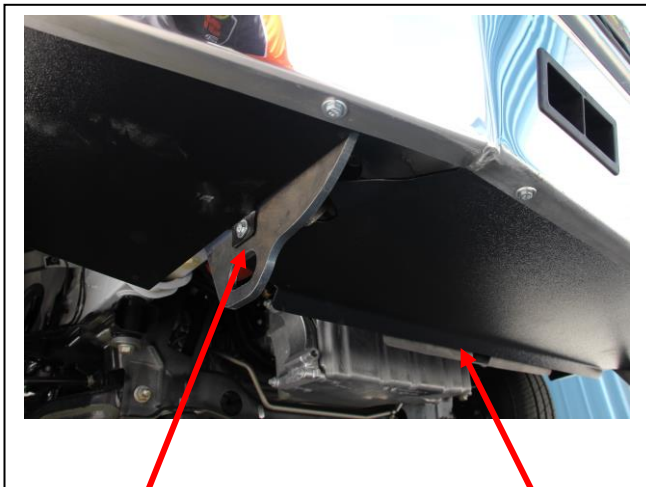
Po Box 122  
Margate QLD 4019  
Australia



**Figure 13:** Side view.



**Figure 14:** Drivers side underbelly guard.



**Figure 15:** Share same bolt for rear hole. Flange to bottom on centre.



**Figure 16:** Mark and trim guard liner to fit rear of underbelly guard.



East Coast Bullbars (ECB Pty Ltd)

Tel: 07 3897 5700

Fax: 07 3283 1168

ecb@ecb.com.au www.ecb.com.au

29 Snook St  
Clontarf QLD 4019  
Australia

Po Box 122  
Margate QLD 4019  
Australia

WORLD'S BEST  
ALLOY BULLBARS

**We value your comments**

Dear Fitter,

ECB would like to know how you went with the installation of this product. We value your comment and may need to contact you to clarify some details so please complete your contact details clearly.

We would appreciate if you could complete as many of the following details as possible.

<b>Your Name:</b>	<b>Your contact No.</b>
<b>Product Part No.</b>	<b>Product Invoice No.</b>
<b>Product Description:</b>	<b>Make, model, and year of vehicle:</b>
<b>Product Work Order No.</b>	<b>Company your from/Company product purchased from:</b>

**Date of fitment:** \_\_\_\_/\_\_\_\_/\_\_\_\_

Was the fitting hardware supplied complete?

Yes

No

If no what was not supplied

---

---

Did the installation go well?

Yes

No

Please provide comments

---

---

Please draw diagrams if you need to.

**Post to**  
Reply Paid122  
PO Box 122  
Margate QLD 4019

**Fax to**  
(07) 3283 1168



WORLD'S BEST  
ALLOY BULLBARS

East Coast Bullbars (ECB Pty Ltd)

Tel: 07 3897 5700

Fax: 07 3283 1168

ecb@ecb.com.au www.ecb.com.au

29 Snook St  
Clontarf QLD 4019  
Australia

Po Box 122  
Margate QLD 4019  
Australia

## DESPATCH CHECKLIST BMB60SY

Work Order #		<b>See other side of this page for photos of all mounts</b>
Finish:		
Transport:		
Due Date:		

- OC.....1 – Pair Steel mounting brackets
- OC.....1 – R/H Steel canister bracket (BMB60SY\_C6MS)
- OC.....1 – L/H Steel canister bracket (BMB60SY\_C4MS)
- OC.....1 – Centre under body guard (p/c black)
- OC.....1 – Pair side under body guards (p/c black)
- BK.....2 – Alloy guard support mounts – **In bolt kit**
- BK.....1 – Bolt Kit
- BK.....1 – ECB LED Indicator / Park light kit
- BK.....1 – ECB fog light kit
- BK.....1 – Quick click fog kit (IC12COL1004ECB)
- BK.....1 – 2950mm Length 6mm clip lock trim
- BK.....2 – 550mm length 3mm clip lock trim
- OC.....2 – ECB Overrides – **Fitted to bar**
- OC.....3 – 6mm Air scoops – **Fitted to bar**
- OC.....3 – 6mm Air scoops – **Fitted to bar**



Is this product “the best it can be” Yes \_\_\_\_\_/\_\_\_\_\_

Wrapper’s initials / Checker initials

If NO fix before continuing

All parts checked and completed by:

Nut and bolts: \_\_\_\_\_ Date \_\_/\_\_/\_\_

Order control: \_\_\_\_\_ Date \_\_/\_\_/\_\_

Final wrap check: \_\_\_\_\_ Date \_\_/\_\_/\_\_



East Coast Bullbars (ECB Pty Ltd)

Tel: 07 3897 5700

Fax: 07 3283 1168

ecb@ecb.com.au www.ecb.com.au

29 Snook St  
Clontarf QLD 4019  
Australia

Po Box 122  
Margate QLD 4019  
Australia

WORLD'S BEST  
ALLOY BULLBARS

